

I C O N I C C O A S T A L O F F I C E C O M P O U N D

1 9 5 0 W C O A S T H W Y

N E W P O R T B E A C H



1950 W Coast Highway provides an iconic address within a one of a kind coastal environment. Originally designed and constructed by famed local architect J. Herbert Brownell, the newly restored mid-century modern property features a reception, large open work area, conference room/office with dedicated patio, kitchenette and large wing with dedicated entrance/balcony and bonus studio. With its prestigious Mariners Mile identity, the property is close to Southern California's most distinguished neighborhoods, hotels, restaurants and all other amenities that Newport Beach has to offer.

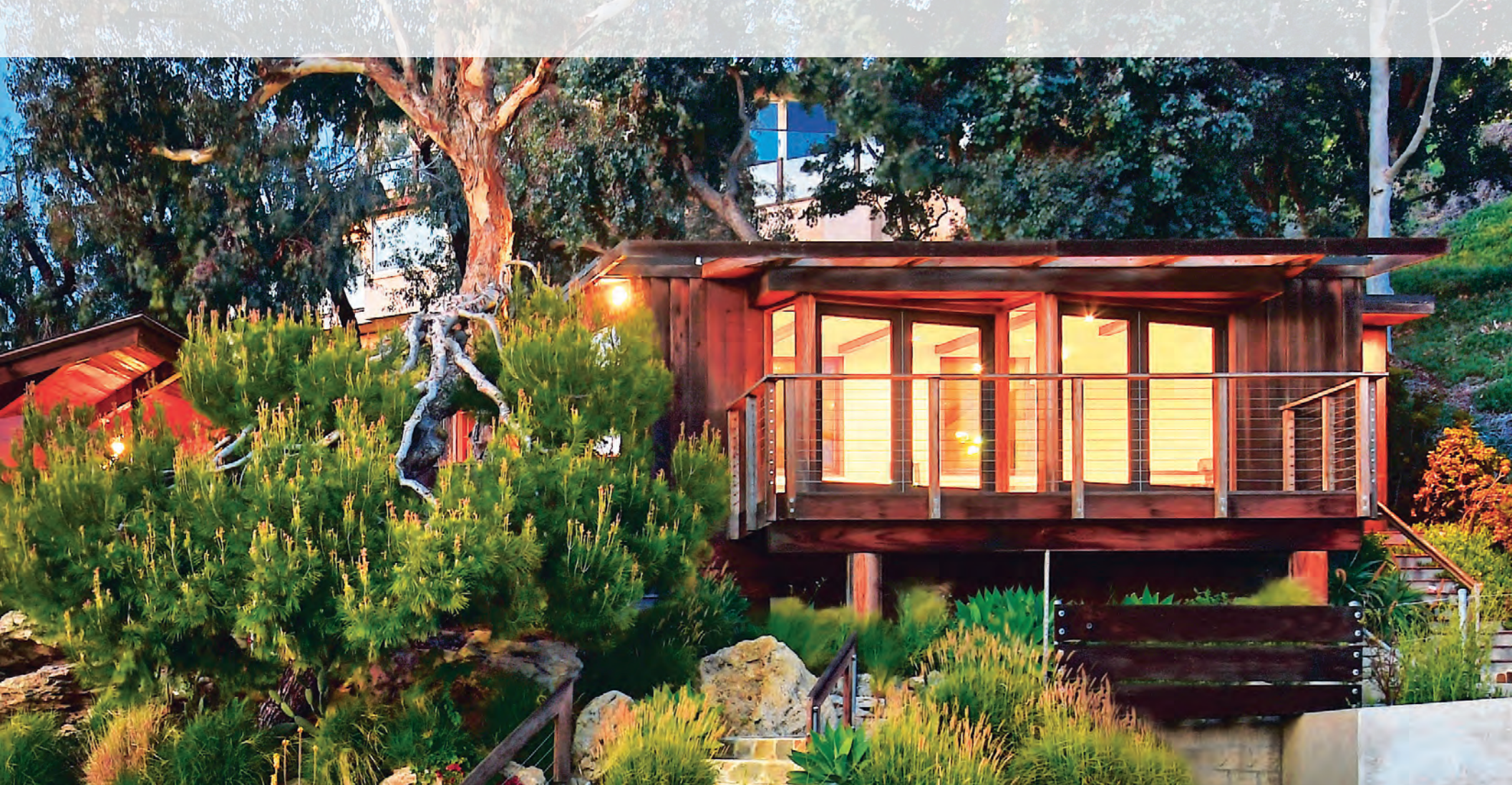
- Newly restored, mid-century modern design
- Prestigious Mariner's Mile identity
- Ultimate man cave, office and/or art studio
- Situated on +/- 11,860 SF parcel
- Panoramic Newport Harbor views





1950 W COAST HWY NEWPORT BEACH





FOR ADDITIONAL INFORMATION PLEASE CONTACT

John Pomer
949.945.2649
john@redwoodwest.com
Lic. #01440689

Benjamin Gott
949.945.2648
ben@redwoodwest.com
Lic. #01724507

Korbin Duley
949.945.2647
korbin@redwoodwest.com
Lic. #01944912

RW | **REDWOOD
WEST**

The information contained in this document has been obtained from sources believed reliable. While Redwood West does not doubt its accuracy, Redwood West has not verified it and makes no guarantee, warranty or representation about it. It is your responsibility to independently confirm its accuracy and completeness. You and your advisors should conduct a careful, independent investigation of the property to determine your satisfaction to the suitability of the property for your needs.